

#### 20" Hopper:

1-90-584200-1 (Black)

1-90-584200-14 (Majolica Brown)

#### 22" Hopper:

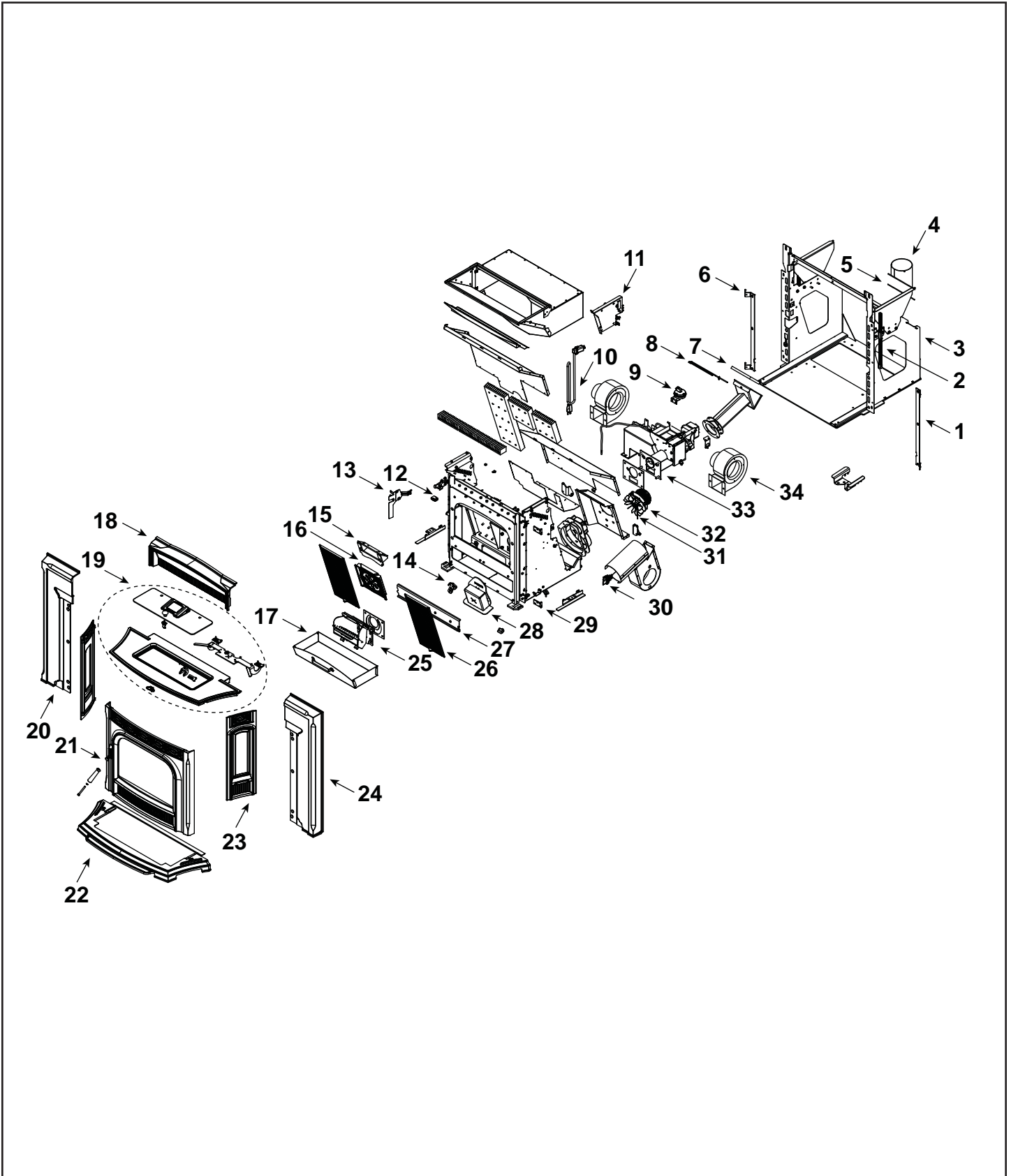
1-90-584220-1 (Black)

1-90-584220-14 (Majolica Brown)

#### 24" Hopper:

1-90-584240-1 (Black)

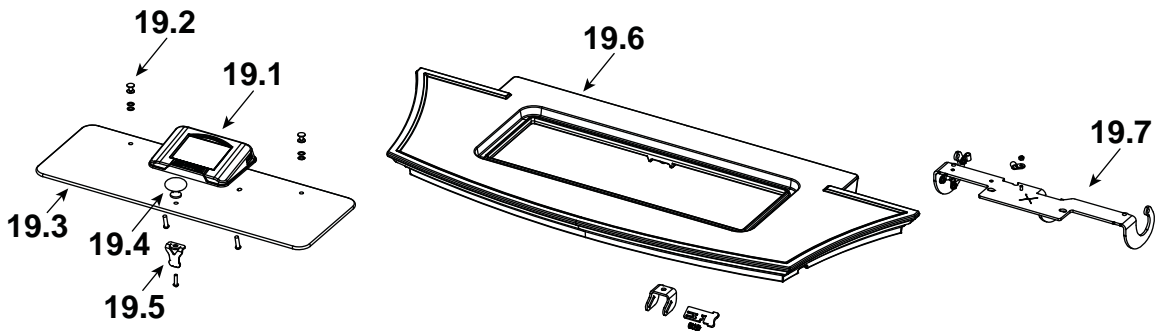
1-90-584240-14 (Majolica Brown)



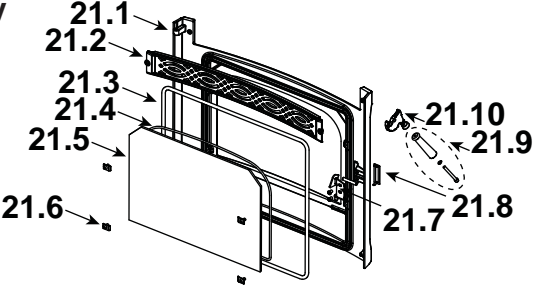
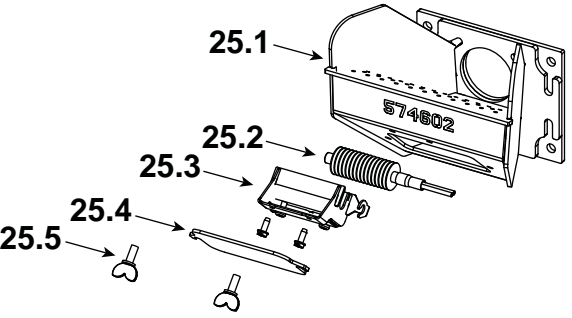
ITEM	Description	COMMENTS	PART NUMBER
1	Cast Side Hinge	Right & Left	1-00-574075
2	All Thread .500-13 x 12, Frame Jacking	Qty 2 req	3-31-00949
	Jack Plate	Qty 2 req	1-10-574099W
3	Mounting Frame Assembly		1-10-574077A
	Roller hardware	4 sets	1-00-02243
4	Pipe Stub for 4 in. Flex/PL w/gasket		1-00-574034
5	Pipe Stub Plate Gasket		3-44-574045
6	Cast Side Hinge	Right & Left	1-00-574075
7	Docking Gasket Silicone		3-44-06108
8	Thermister Probe (ESP Probe)		3-20-00844
9	Differential Switch		3-20-6866
	Silicone Tubing, 1/8"	5 Ft	1-00-5113574
10	Power Cord - 14'		3-20-584024
	Line Filter		3-20-803744
11	Control Board Mounting Plate		1-10-584012A
	Power Board		1-00-05372
	Gasket, Hopper Top	20 ft	1-00-375501
	Gasket, Hopper Throat		3-44-677185
12	Wiring Harness		3-20-08727
13	Line Filter Mounting Bracket		1-00-584034
14	Combustion Cover Latch Assembly		1-00-574080
15	Medallion Holder		1-10-574098W
16	Cast Center Medallion		3-00-584027
17	Ash Pan		1-10-574007A
18	Cast Wing Center	Black Paint	4-00-574323P
		Majolica Brown	1-10-574323-14
19	Cast Top / Hopper Lid Assembly		<b>See following page</b>
20	Cast Wing Left	Black Paint	4-00-574321P
		Majolica Brown	1-10-574321-14
21	Door Assembly		<b>See following page</b>
22	Cast Bottom Ashlip	Black Paint	3-00-574318P
		Majolica Brown	1-10-574318-14
	Magnetic Latch Assembly w/3/16" Hole	2 Sets	1-00-08288
23	Cast Side Panel, Qty 2 req	Black Paint	4-00-674054P
		Majolica Brown	1-10-574054-14
24	Cast Wing Right	Black Paint	4-00-574322P
		Majolica Brown	1-10-574322-14
25	Burn Pot Weldment		<b>See following page</b>

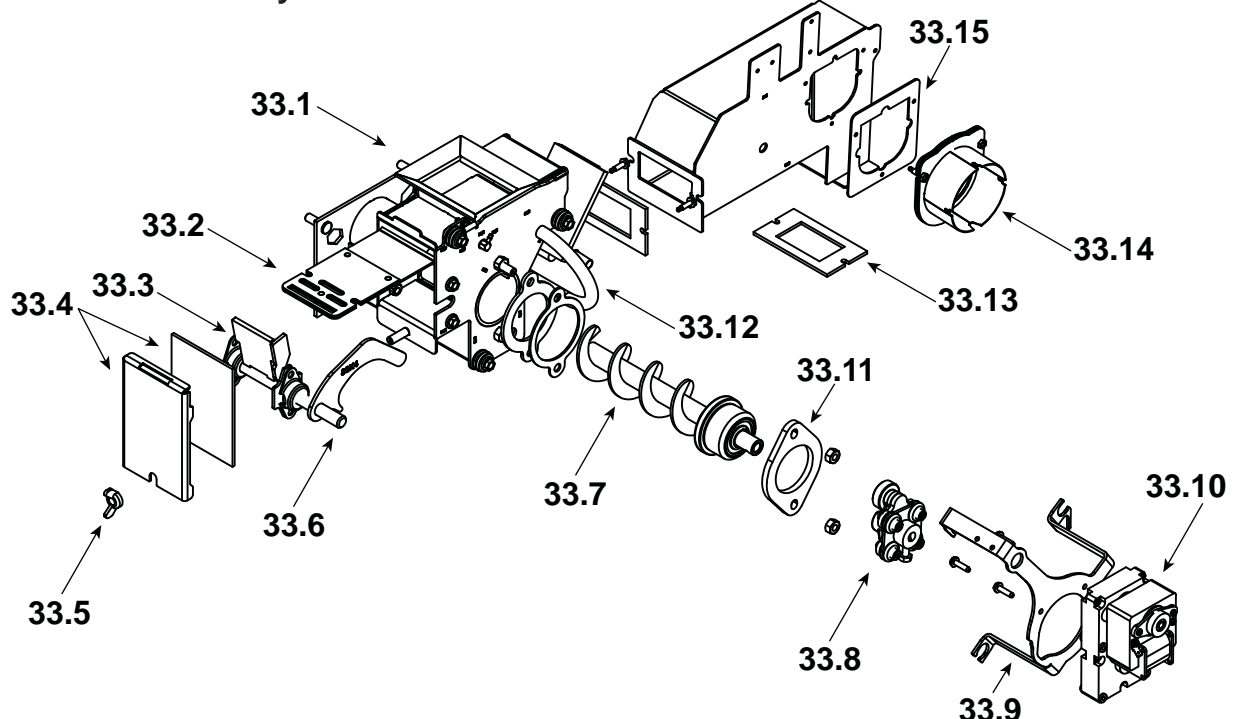
ITEM	Description	COMMENTS	PART NUMBER
26	Cast Heat Exchanger CVR	Qty 2 req	3-00-674050
27	Cleanout Plate Assembly		1-00-574086
	Cleanout Plate Gasket	12 Ft	1-00-10050
28	Combustion Cover		1-10-574087A
29	Hinge Plate	Qty 2 req	3-00-674047
30	Spring Latches with hardware	Set of 2	1-00-00927
31	Motor Blade, 5" Double Paddle	Commonly required for Combustion Blower replacement	3-20-502221
	Blower Mounting Screws (5 Sets)		1-00-832150
32	Combustion Blower		1-00-02275
33	Feeder Assembly		<b>See following page</b>
34	Distribution Blower	Qty 2 req	3-21-33647

### #19 Hopper Lid Assembly



19.1	Touch Control		1-00-777552
	Cable Cover Gasket	Post HF2084013	3-44-777549
19.2	Screw Post Kit	Set of 20	1-00-129004
19.3	Touch Control Hopper Lid Glass		3-40-574365
19.4	Hopper Lid Knob w/Screw	Black	1-00-02000-1
19.5	Hopper Lid Latch		1-00-574365
19.6	Cast Top	Black Paint	4-00-584020P
		Majolica Brown	1-00-584020-14
19.7	Hopper Lid Hinge w/Hardware		1-00-584003
	Gasket, 3/8 x 1/2	20 Ft	1-00-375501
	Ball Plunger Retainer	6 Sets	1-00-5500
	Hinge Pin Plate w/Hardware	1 Set	1-00-777560
	Dowel Pin, 1/4 x 3/4	Pkg of 15	3-30-2015-15
	Hopper Lid Latch Release Kit w/Hardware		1-00-584345

ITEM	Description	COMMENTS	PART NUMBER
<b>#21 Load Door Assembly</b> 			
21.1	Door Assembly	Black Paint	4-00-674053A
		Majolica Brown	4-00-674053-14A
21.2	Air Grill		3-00-674052S
21.3	Gasket, 3/8 4 Strand	30 Ft	1-00-00888
21.4	Gasket, 3/16 Round w/PSA	10 FT	1-00-1186258229
21.5	Glass w/Gasket		1-00-677000
21.6	Glass Clips	Pkg of 4	1-00-249140
21.7	Latch Retainer		2-00-674098S
21.8	Latch Trim Plate ( Enamel Only )		2-00-674206P
21.9	Wooden Handle w/Bolt	Pkg of 2	1-00-00247
21.10	Door Latch, Painted		3-00-249119P
	Door Latch Roller Hardware		1-00-05230
<b>#25 Burn Pot Weldment</b> 			
25.1	Burn Pot Weldment w/Cradle		1-00-574605
25.2	Igniter Element		3-20-677200
		Pkg of 10	1-00-677200
25.3	Igniter Cradle		1-00-574604
25.4	Burn Pot Cleanout Cover w/Wing Screws	2 sets	1-00-06623
25.5	Thumb Screw, 1/4-20 x 5/8	Pkg of 10	3-31-782108-10
	Gasket, Burn Pot		3-44-237639
	Flame Guide		3-00-03000

ITEM	Description	COMMENTS	PART NUMBER
<b>#33 Feeder Assembly</b>			
			
33.1	Ultra Feeder Weldment		1-10-680021W
33.2	Slide Plate Assembly		1-10-677121A
33.3	Pusher Arm Pillow Block	Pkg of 4	3-31-3614087-4
33.4	Gasket, UL Feeder Cover		1-00-677122
33.5	5/16-18 wing screw	Pkg of 25	3-30-8012-25
33.6	UL Feeder Pusher Arm		1-10-677187W
33.7	UL Feeder Auger Assembly		3-50-00565
33.8	Cam Block Assembly		1-10-777620A
	Cam Bearing		3-31-3014
	Cam Block		3-00-677154
33.9	Motor Mount w/Hardware		1-00-584035
33.10	Pellet Feeder Gear Motor, 4 RPM		3-20-60906
33.11	Bearing Flange w/Hardware		1-00-04035
33.12	Feeder Air Crossover Kit		1-00-67900
	9MM Silicone Tube	5 Ft	1-00-511427
33.13	Gasket Ultra Air Intake	Pkg of 10	3-44-677160-10
33.14	Pellet Air Intake Assembly		1-10-06810A
33.15	Gasket Feeder Air Intake	Pkg of 6	3-44-72224-6

